

# American Eagle Manufacturing

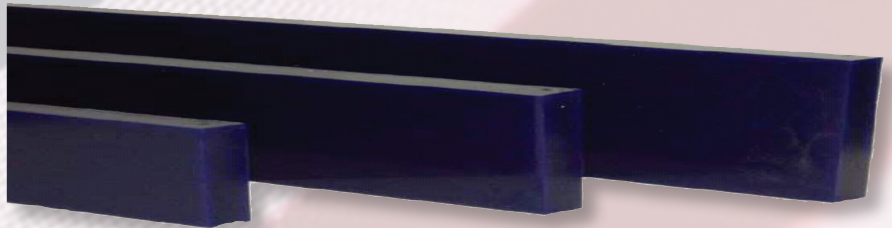
## Replacement Blade Guide & Material Selection



GET THE **EAGLE EDGE!**  
MADE IN THE U.S.A.

# Eagle Blades

## (EB Series)



### 4" Width Ordering Information

Ordering Number 1" Thick	Ordering Number 3/4" Thick	Ordering Number 1/2" Thick	Length
EB4-1-24	EB4-750-24	EB4-500-24	24"
EB4-1-36	EB4-750-36	EB4-500-36	36"
EB4-1-48	EB4-750-48	EB4-500-48	48"
EB4-1-60	EB4-750-60	EB4-500-60	60"
EB4-1-72	EB4-750-72	EB4-500-72	72"
EB4-1-96	EB4-750-96	EB4-500-96	96"

Our Eagle Blades are made of a high performance urethane specially designed for high wear applications. Made of 85A Durometer with special additives our blades have a low coefficient of friction making our blades the best on the market.

Eagle blades are being used to replace secondary blades, V-plow blades and Diagonal blades.

### 5" Width Ordering Information

Ordering Number 1" Thick	Ordering Number 3/4" Thick	Ordering Number 1/2" Thick	Length
EB5-1-24	EB5-750-24	EB5-500-24	24"
EB5-1-36	EB5-750-36	EB5-500-36	36"
EB5-1-48	EB5-750-48	EB5-500-48	48"
EB5-1-60	EB5-750-60	EB5-500-60	60"
EB5-1-72	EB5-750-72	EB5-500-72	72"
EB5-1-96	EB5-750-96	EB5-500-96	96"

Our high wear material also makes our blades great for lining high wear areas. Easy to drill and cut for proper installation.

These blades are in stock and ready to ship. We offer custom molded sizes and custom cutting and drilling upon request.

### 6" Width Ordering Information

Ordering Number 1" Thick	Ordering Number 3/4" Thick	Ordering Number 1/2" Thick	Length
EB6-1-24	EB6-750-24	EB6-500-24	24"
EB6-1-36	EB6-750-36	EB6-500-36	36"
EB6-1-48	EB6-750-48	EB6-500-48	48"
EB6-1-60	EB6-750-60	EB6-500-60	60"
EB6-1-72	EB6-750-72	EB6-500-72	72"
EB6-1-96	EB6-750-96	EB6-500-96	96"

**AMERICAN EAGLE MANUFACTURING LLC**

[www.AmericanEagleManufacturing.com](http://www.AmericanEagleManufacturing.com)

1-866-713-8985