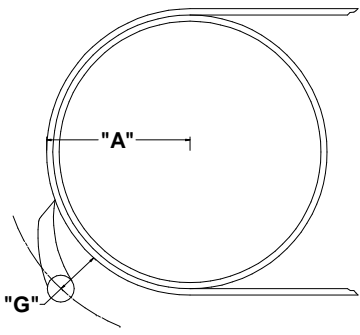


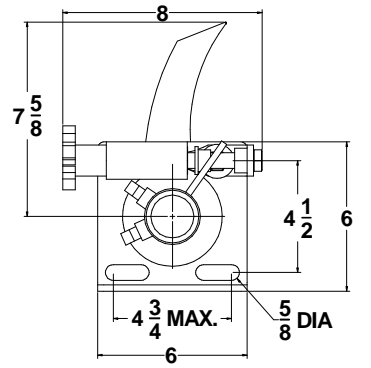
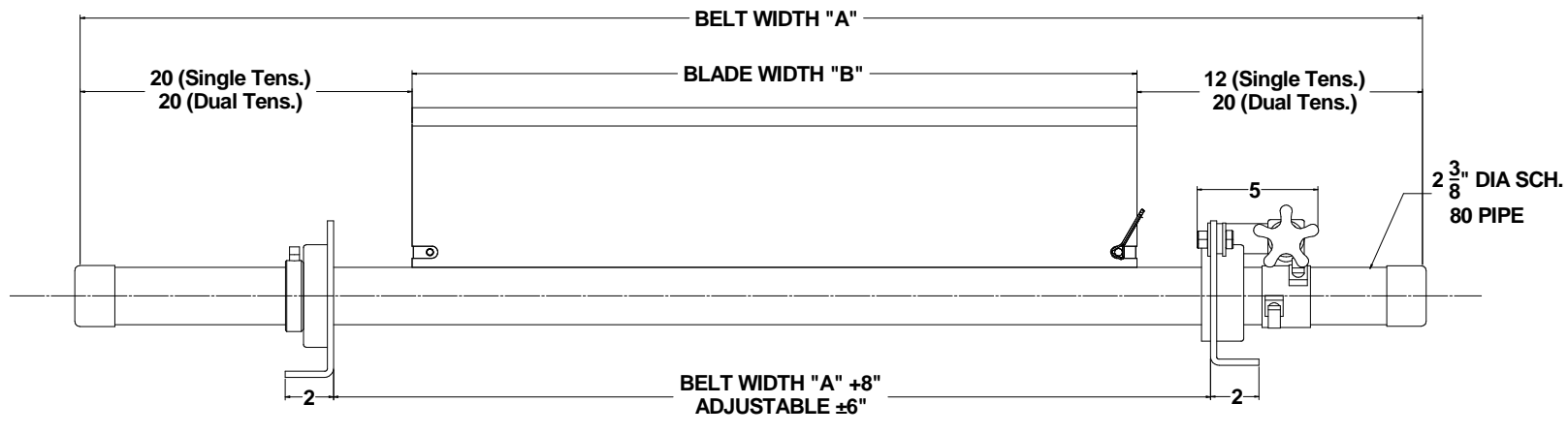
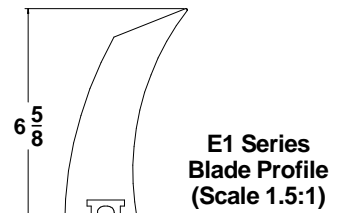
GAP DIMENSION CHART	
Pulley Diameter	"G" Dimension
18	4 1/4
20	3 5/8
24	3 5/8
30	3 1/2
36-42	3 1/8
48	3
Tolerance no more than $\pm 1/4"$	

*Multiply "A" x 2 for pulley diameter.



Cleaner Specifications								
-2" Blade Width				-8" Blade Width				
Part No.	Belt Width "A"	Blade Width "B"	Pipe Width "C"	Part No.	Belt Width "A"	Blade Width "B"	Pipe Width "C"	
E1CSM18	18"	16"	48"	E1CSM18-8	18"	10"	48"	
E1CSM24	24"	22"	54"	E1CSM24-8	24"	16"	54"	
E1CSM30	30"	28"	60"	E1CSM30-8	30"	22"	60"	
E1CSM36	36"	34"	66"	E1CSM36-8	36"	28"	66"	
E1CDM42	42"	40"	72"	E1CDM42-8	42"	34"	72"	
E1CDM48	48"	46"	86"	E1CDM48-8	48"	40"	86"	
E1CDM54	54"	52"	92"	E1CDM54-8	54"	46"	92"	
E1CDM60	60"	58"	98"	E1CDM60-8	60"	52"	98"	
E1CDM72	72"	70"	110"	E1CDM72-8	72"	64"	110"	

18"-42" Belt Width - Single Tensioner
 48"-72" Belt Width - Dual Tensioner
 Single Tensioner Cleaner will come with Tensioner on right side unless specified left.

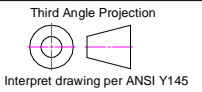


REV.	DESCRIPTION	BY	CHK'D
		DATE	DATE
-	-	-	-
-	-	-	-
-	-	-	-
-	-	-	-
-	-	-	-

St'd Tolerances for Cast Urethane
 (Unless otherwise noted)
 Decimal Dimensions:
 3 Decimal places ± 0.015
 2 Decimal places ± 0.030
 Hole locations ± 0.030
 Angular Dimensions:
 In degrees ± 60 min.
 In degrees & min. ± 15 min.
 Fractional Dimensions $\pm 1/32$

St'd Tolerances for Machined Urethane
 (Unless otherwise noted)
 Decimal Dimensions:
 3 Decimal places ± 0.005
 2 Decimal places ± 0.015
 Hole locations ± 0.010
 Angular Dimensions:
 In degrees ± 30 min.
 In degrees & min. ± 5 min.
 Fractional Dimensions $\pm 1/64$

Design derived from customer supplied drawings and or parts



This drawing in design and detail is the property of American Eagle Manufacturing, LLC. It is returnable upon request and must not be reproduced or the information contained transmitted to any unauthorized person or organization without written consent from American Eagle Manufacturing, LLC. It is to be used only in connection with our work as authorized by us. All rights of design and invention are reserved.



201 Kale Road
 New Bern, NC 28562
 Ph: 252-633-0603 Fax: 252-633-5487
 www.AmericanEagleManufacturing.com

Drawn **Jeff Langley** 12-15-11
 APPROVED BY **David Liland** 12-15-11
 SCALE: N.T.S.

SIZE
A

E1 Mine Duty Primary Cleaner
 REV - 000 SHEET 1 OF 1