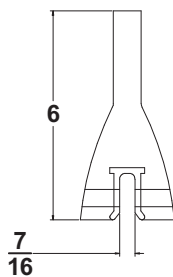


**Blade Setting Options
(for Clearance)**

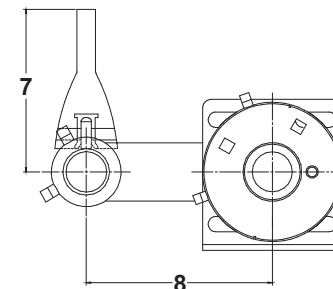
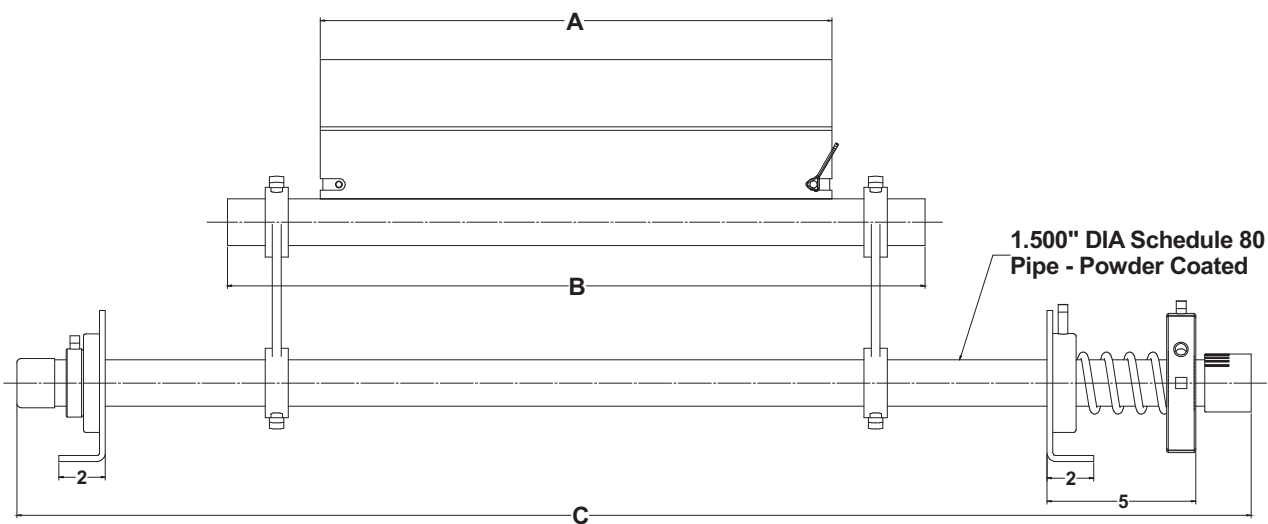


**E7SM
Blade Profile
(Scale 1.5:1)**

Cleaner Specifications

Part No.	Belt Width	-2 Blade Width "A"	Short Pipe Width "B"	Long Pipe Width "C"
E12SCE7M18	18"	16"	24"	68"
E12SCE7M24	24"	22"	30"	74"
E12SCE7M30	30"	28"	36"	80"
E12SCE7M36	36"	34"	42"	86"
E12SCE7M42	42"	40"	48"	92"
E12SCE7M48	48"	46"	54"	98"
E12SCE7M54	54"	52"	60"	104"
E12SCE7M60	60"	58"	66"	110"
E12SCE7M72	72"	70"	78"	122"

PATENT PENDING



-	-	-	-
-	-	-	-
001	Redesigned E12SCE7M to show new EasyTorsion Ring	JSL	-
REV.	DESCRIPTION	12-28-11	-
		BY	CHK'D
		DATE	DATE

**St'd Tolerances
for Cast Urethane**

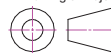
(Unless otherwise noted)
 Decimal Dimensions:
 3 Decimal places ±.015
 2 Decimal places ±.030
 Hole locations ±.030
 Angular Dimensions:
 In degrees ±60 min.
 In degrees & min. ±15 min.
 Fractional Dimensions ±1/32

**St'd Tolerances
for Machined Urethane**

(Unless otherwise noted)
 Decimal Dimensions:
 3 Decimal places ±.005
 2 Decimal places ±.015
 Hole locations ±.010
 Angular Dimensions:
 In degrees ±30 min.
 In degrees & min. ±5 min.
 Fractional Dimensions ±1/64

Design derived from customer
supplied drawings and or parts

Third Angle Projection



Interpret drawing per ANSI Y145

This drawing in design and detail is the property of American Eagle Manufacturing, LLC. It is returnable upon request and must not be reproduced or the information contained transmitted to any unauthorized person or organization without written consent from American Eagle Manufacturing, LLC. It is to be used only in connection with our work as authorized by us. All rights of design and invention are reserved.



Drawn
Jeff Langley 11-21-11
 APPROVED BY
David Liland 12-09-11
 SCALE: N.T.S.

SIZE
A

201 Kale Road
 New Bern, NC 28562
 Ph: 252-633-0603 Fax: 252-633-5487
www.AmericanEagleManufacturing.com

E12SCE7M

REV - 001

SHEET 1 OF 1