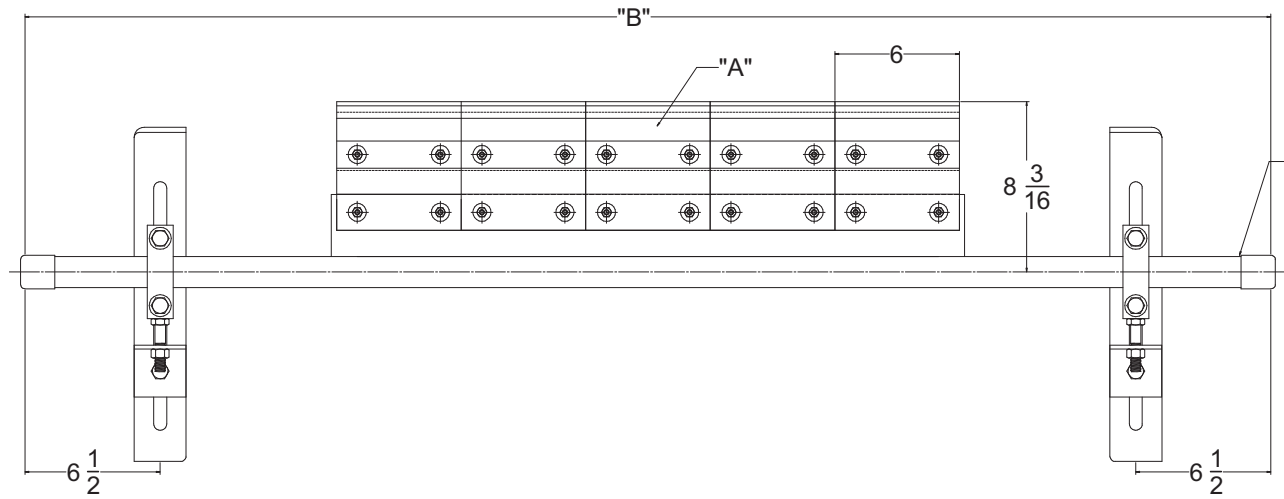


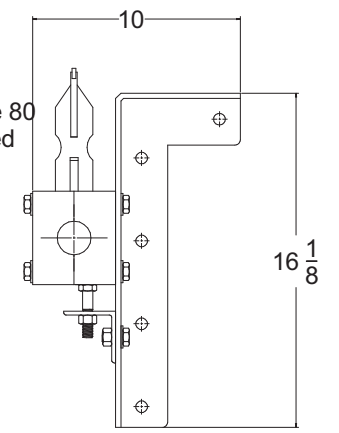
**E7U-C-CTB
Blade Profile
(Scale 1.5:1)**

Cleaner Specifications

| Part No. | Belt Width | Parts Required "A" | Pipe Width "B" |
|--------------|------------|--------------------|----------------|
| E8SC18-C-CTB | 18" | 3 | 48" |
| E8SC24-C-CTB | 24" | 4 | 54" |
| E8SC30-C-CTB | 30" | 5 | 60" |
| E8SC36-C-CTB | 36" | 6 | 66" |
| E8SC42-C-CTB | 42" | 7 | 72" |
| E8SC48-C-CTB | 48" | 8 | 78" |
| E8SC54-C-CTB | 54" | 9 | 84" |
| E8SC60-C-CTB | 60" | 10 | 90" |
| E8SC72-C-CTB | 72" | 12 | 102" |



1.500" DIA Schedule 80
Pipe - Powder Coated

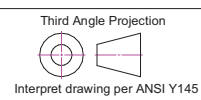


| | | | |
|------|-------------|------|-------|
| - | - | - | - |
| - | - | - | - |
| - | - | - | - |
| - | - | - | - |
| REV. | DESCRIPTION | BY | CHK'D |
| | | DATE | DATE |

**St'd Tolerances
for Cast Urethane**
(Unless otherwise noted)
Decimal Dimensions:
3 Decimal places ±.015
2 Decimal places ±.030
Hole locations ±.030
Angular Dimensions:
In degrees ±60 min.
In degrees & min. ±15 min.
Fractional Dimensions ±1/32

**St'd Tolerances
for Machined Urethane**
(Unless otherwise noted)
Decimal Dimensions:
3 Decimal places ±.005
2 Decimal places ±.015
Hole locations ±.010
Angular Dimensions:
In degrees ±30 min.
In degrees & min. ±5 min.
Fractional Dimensions ±1/64

Design derived from customer
supplied drawings and or parts



This drawing in design and detail is the property of American Eagle Manufacturing, LLC. It is returnable upon request and must not be reproduced or the information contained transmitted to any unauthorized person or organization without written consent from American Eagle Manufacturing, LLC. It is to be used only in connection with our work as authorized by us. All rights of design and invention are reserved.



Drawn
Jeff Langley 12-05-11
APPROVED BY
X
SCALE: N.T.S.

201 Kale Road
New Bern, NC 28562
Ph: 252-633-0603 Fax: 252-633-5487
www.AmericanEagleManufacturing.com

SIZE
A
**E7 Secondary Cleaner
(with E7U-C-CTB Blade)**
REV - 000 SHEET 1 OF 1